

RESOURCE

NMF Scholarships Leave Lasting Impact for Northwest Minnesota Students



02

MESSAGE FROM
THE PRESIDENT

03

NMF RESPONDS
TO COVID-19

04



THOMPSON FAMILY
GIVES LOCALLY TO
CREATE A STRONGER
COMMUNITY FOR ALL

07

IDEA

IDEA COMPETITION
NAMES 2020 WINNERS

Attention Reader: This is the first newsletter mailing we have done since migrating to our new database system. If you would like to update your contact information or mailing preferences with us, please contact Kari Cooper, communications manager, at karc@nwmf.org. Thank you!

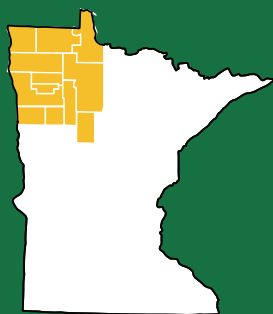


OUR MISSION

The Northwest Minnesota Foundation invests resources, facilitates collaboration and promotes philanthropy to make the region a better place to live and work.

BOARD OF DIRECTORS

Kristin Eggerling, Chair
 Steve Anderson, Vice Chair
 Cathy Forgit, Secretary
 Todd Beckel, Treasurer
 Dennis Bona
 Cheri Gunvalson
 Mike LaRoque
 Michelle Paquin
 Leah Pigatti
 Deb Zak



 @nwmnfoundation

 @NMF_1986

 www.nwmmf.org

MESSAGE FROM THE PRESIDENT



I'm a strong believer that for words to mean anything, they need to be backed up with action. After the murder of George Floyd and the tragic death of Officer Cody Holte, we released a statement expressing our sorrow over the violence, destruction, and senseless loss of life. To follow this statement with action, we granted funding to the *Community Foundation of Grand Forks, East Grand Forks & Region* and also to *Voices for Racial Justice*. We also joined the *Minnesota Philanthropic Collective to Combat Anti-Blackness & Realize Racial Justice* and will be furthering our partnership with this collective to advance racial justice throughout Northwest Minnesota.

To assist in the relief of the COVID-19 pandemic, we've been processing grants and loans at a rate we've never before attempted. We've processed more grants and loans in two months than we usually do in a year. It's been busy, but we get energy and motivation from all of you throughout the region who are working so hard during this time, including:

- ◆ Entrepreneurs and small businesses making changes to how they do business
- ◆ Child care providers adding cleaning and physical distancing to how they care for children
- ◆ Food shelves striving to meet the increased demand
- ◆ Organizations that support our elderly, who have been hit especially hard by this pandemic
- ◆ Homeless shelters adding cleaning and physical distancing to how they provide services
- ◆ Frontline workers in health, emergency services, food services, and essential supply chains
- ◆ Teachers, paraprofessionals, and everyone supporting the education and well-being of the region's students

Thank you for all that you do and for your dedication to all of us. Please know that you are valued and appreciated.

Thank you to all of our generous donors and funders. Your gifts truly make a difference and help to *Build Better Lives* for those who call the region home.

During this tumultuous and busy time, I am reminded of a quote from Martin Luther King Jr.:

*If you can't fly, run.
 If you can't run, walk.
 If you can't walk, crawl.
 But by all means, **keep moving.***

Know that we will **keep moving** for Northwest Minnesota.

With gratitude,

Karen White
 President and CEO

COVID-19 Dashboard

NMF's impact and contributions as of July 2020

Northwest Minnesota Emergency Disaster Recovery Fund Grants



Grants Awarded



\$197,000 Total

COVID-19 Component Fund Grants

7 Grants - \$54,500 Total

NMF Funding Allocated

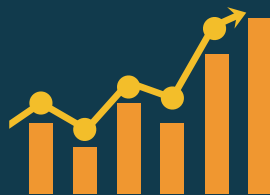
\$303,000



External Grant Funding Received
\$490,500

External Loan Funding Received

\$1,195,000



Loans Approved

76

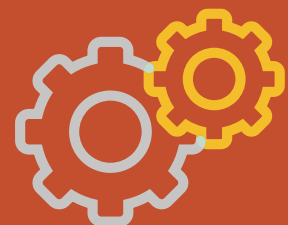
Northwest Minnesota Child Care Emergency Grants



259 Grants



\$279,000 Total



Approved Loan Total

\$869,048



Warren, MN

THOMPSON FAMILY GIVES LOCALLY TO CREATE A STRONGER COMMUNITY FOR ALL

In Northwest Minnesota, we've seen what great things can be accomplished when we invest in our local communities. In Warren, Minnesota, Phil and Gloria Thompson are demonstrating just how influential it can be to imagine a better community and use philanthropy to bring those ideas to life.

Phil has lived the majority of his life in Northwest Minnesota and North Dakota. He grew up near Valley City, North Dakota, attended North Dakota State University in Fargo, and served in the United States Air Force. His first job after his military service was working as a lender with the company that is now AgCountry Farm Credit Services based in Grand Forks, and he found a home base in Warren. Phil's wife, Gloria, grew up in rural Cooperstown, North Dakota. After she graduated from Valley City State Teachers College, she taught elementary school in Casselton, North Dakota, Biloxi, Mississippi, and Warren, Minnesota, for over twenty years. Phil and Gloria chose to stay in Warren to raise their two children. Phil started his own financial business in 1989, and Gloria joined the newly established business in the early '90s.

"Warren has everything you need: a hospital, schools for the kids, access to major highways, and it's close to Grand Forks," said Phil. Recognizing that the Warren community had a lot to offer, the Thompsons saw opportunities to bring additional assets to the area. Phil has been involved with a number of economic development projects over the years, and that passion led to his early involvement with Northwest Minnesota Foundation (NMF), which was established in 1986. Today, Phil serves on the NMF Philanthropic Initiatives Committee.

The Thompsons have been involved with a number of notable projects in the Warren area. They've made major gifts to the

hospital and the assisted living housing development project, and have contributed to the establishment of a new childcare facility.

"Once you start giving at significant levels, you start to see real change happen in your community," said Phil. "It makes you feel good, and you start thinking differently about what's possible."

The Thompsons also support the Red River Valley Emerging Leadership Program. Not only have they made financial contributions, but Phil has had a number of his employees participate in the program. He also involves his business partners and employees with their corporate giving projects because he believes that building a culture of philanthropy encourages those individuals to consider their own charitable giving. He said, "I want them to know it is important to think beyond yourself. It is everyone's responsibility to build a community, and everyone in that community has to share that mindset."

Phil and Gloria have also passed down their values and philanthropy ethos to their two children, Mark and Monica. Both are involved in their own charitable giving and volunteer projects, and they are also involved with Phil and Gloria's local charitable giving.

Most recently, the Thompsons are helping to launch a \$1.5 million fundraising campaign for a new childcare center. They have also recently helped establish a recreation facility in Warren, which provides a safe place for kids to hang out and draws visitors from nearby communities. They believe that these assets will bring additional families and residents to the Warren community. "The assets certainly bring people to town, but treating them well keeps them here," said Phil.



If you would like to learn more about how to make a meaningful gift in your community, visit www.nwmf.org and click "Ways to Give." Text "NMF" to 50155 to donate from your phone to our general endowment fund!

DALE FAMILY SCHOLARSHIPS SUPPORT RED LAKE FALLS STUDENTS GOING INTO THE MEDICAL FIELD

Growing up in a small town has its advantages: you know your neighbors, enjoy small class sizes in schools, and have easy access to the outdoors. However, small towns also have limitations. High school graduates often have to look beyond their towns in search of the next opportunity. The Dale family, originally of Red Lake Falls, wanted to help Lafayette High School graduates take that next big step.



Dr. Lester "Les" Norris Dale

Dr. Lester "Les" Norris Dale was the only physician in Red Lake Falls during the 16 years he lived there and was raising his family. His daughter, Terry Dale-Pfister, remembers how special it

was growing up in Red Lake Falls. "It was a great community that really provided me with a good start in life," she said. In 1963, the Dales moved to Hastings, Minnesota, where Les continued to practice medicine.

After Dr. Dale passed away in 2000, his adult children came together to find a meaningful way to honor their father's memory. In 2001, they established the Lester

Norris Dale, MD Scholarship Fund at NMF. This restricted fund of the Red Lake Falls Education Fund supports furthering the educational opportunities of young people going into medical and related health sciences fields. Since the scholarship was established, the fund has provided twenty Red Lake Falls students with educational scholarships. Additionally, in 2014, Terry established her own scholarship, which provides the same students who receive her father's scholarship with an additional year of financial support. Six students from Red Lake Falls have benefitted from this two-year support so far.

"This is just a small way for me to pay it forward for a community that means so much to me," said Terry. Although she has been a resident of Hayward, Wisconsin, for the past thirty years, she enjoys staying connected with the Red Lake Falls community, and has returned to her hometown through the years for school reunions and other community events.



Dr. Dale's daughter, Terry Dale-Pfister



Hannah Smeby, scholarship recipient

SCHOLARSHIP RECIPIENT TESTIMONIAL: HANNAH SMEBY

"I am currently going into my sophomore year at Bemidji State University, where I am pursuing a bachelor's degree in nursing. In the spring of 2019, I received two scholarships through the Northwest Minnesota Foundation. I received the Northwest Minnesota Women's Fund Scholarship and the Art and Jane Snustad Scholarship. Then again, this spring I was fortunate to receive the Snustad scholarship for my second year at BSU.

When I was applying to colleges my senior year of high school, I found out that I did not qualify for any financial aid. However, through the Northwest Minnesota Foundation, Win-E-Mac School, and other small-town communities and businesses, I received thousands of dollars for my education.

A huge thank you to those who put forth the funds for college students who are just starting their education. It has allowed me to gain an education without putting myself into accumulating debt. Thank you to those who give us students the opportunity to apply for these scholarships, as well as receive them. It is very appreciated!"

Thank you to everyone who made a gift to our

cheers to **NMF!**

virtual fundraiser on June 24, 2020!

We exceeded our goal and raised a grand total of

\$2,605

for our General Endowment Fund.



If you would like to learn more about leaving a legacy in Northwest Minnesota through scholarship funds, visit our website at www.nwmf.org and click on "Ways to Give." Text "NMF" to 50155 to donate from your phone to our general endowment fund!



Betty (Thomason) Murray, class of 1946



Betty on her 80th birthday

BETTY MURRAY: A LIFE OF PASSION AND PURPOSE REMEMBERED BY A CHARITABLE LEGACY

Betty Murray was a woman with many passions. However, her love for teaching and music helped her make a huge impact on the people around her.

Betty had a remarkable talent for music. She began playing the piano at a young age, and later went on to play the clarinet in the Duluth Central High School band and the bassoon in the Duluth Symphony. Betty also loved to sing in the Presbyterian church choir and with the First City Singers. She loved sharing her passion for music with others. She would often bring her keyboard to nursing homes to play and sing for the residents.

After studying history and music at University of Minnesota Duluth, Betty was hired to become a social studies teacher at Bemidji Middle School. She wanted her students to be educated so they could help themselves and their community. A former student spoke about Betty's impact: "She was a wonderful teacher who helped to instill in me a real love of learning and to always do my best."

Betty decided to retire from teaching when her first husband developed a chronic illness and needed her care and companionship. Although Betty decided not to return to teaching after he passed away, she wanted to continue making a difference in young people's lives by creating scholarships.

The Betty L. Murray Scholarship Fund was established at NMF in 2014. This fund supports scholarships to ISD 31 (Bemidji) graduates or its successors who pursue postsecondary education through a college, university, trade school, or other accredited nonprofit technical or vocational programs. Betty Murray passed away on June 30, 2019, at 91 years old. Her passion for teaching and music helped her leave a legacy that continues to inspire others. Betty believed that students should turn their passions into careers. If students are unable to use their special talents to make a living, they should enjoy them as avocations, as Betty did with music.

"She believed strongly in philanthropy and in living below one's means," said her sister, Rebecca Evans. "She was humble, modest, and very frugal. She was aware of the increasing income inequality in our country and wanted to be helpful to less fortunate people—and to do it quietly, without looking for credit or praise while she was still alive."

If you have questions about how you may leave a lasting legacy, contact Northwest Minnesota Foundation to speak to one of our development officers. Visit www.nwmf.org/ways-to-give for more information.



Betty playing piano at BirchHaven



Young Betty (Thomason) Murray in her high school band uniform

12TH ANNUAL IDEA COMPETITION NAMES WINNERS

Northwest Minnesota Foundation (NMF) is proud to announce its 2019–2020 IDEA Competition winners. The IDEA Competition was established in 2008 as a result of a region-wide effort to support and incentivize local talent and ingenuity. Since its inception, the IDEA Competition has awarded over \$408,000 to thirty-six winners and runners-up.



Ron Bergman

First place was awarded to **Muskox** in Mentor, Minnesota. Muskox received a \$15,000 cash award and a \$5,000 service package from IdeaWorks, whose mission is to provide consultation and direct investment in businesses on a case-by-case basis. The Muskox makes snow removal a single-step process by continuing to blow snow in reverse. Traditional snowblower attachments only work moving forward, and the chutes block vision and lack throwing power. The Muskox offers

bidirectional snow blowing, upper cutting edges, an angled back wall for better sight, a slip clutch, and a lowered chute.

The runners-up (in no particular order) include Moonlit Analytics, Table for 7, and F&H Design.



Michael Hendricks

Moonlit Analytics in Bemidji, Minnesota, received a \$5,000 cash award from the competition and a 15-hour Awareness Campaign package from Evolve Creative. The Moonlit Analytics team offers customized and affordable data modeling that can be applied to equipment anomaly detection, customer payment forecasting, sales projections, employee schedule optimization, and much more.



Amber Lynne Cooper

Table for 7 in Bemidji, Minnesota, received a \$4,000 cash award. Table for 7 will be a niche restaurant that will bring Bemidji back to its roots, where every local community should look for the source of its food. Not only will it support and raise up the local growing community, but it will also provide education for people who are passionate about good food. In turn, those people will go on to be more equipped in the food industry as they advance in their career. It is a niche restaurant that is unlike what Bemidji already has for choices of places to eat out.



Tim Halberg
Not pictured:
Marty Feil

F&H Design in Shevlin, Minnesota received a \$1,000 cash award, a \$5,000 service package from Hamre, Schumann, Mueller & Larson, and \$5,000 worth of services from LVI Supply. F&H Design's organizer system will act to protect equipment, or items within the Ice Fishing embodiment. The needless destruction of equipment during hauling, towing the ice fishing sled, and the entanglement of equipment or items will be reduced. This adjustable system is to fit all sizes of the ice fishing sled, and can be customized for individual use planning, and placement of items. The adjustability and interlocking panels will help to secure the load within the sled.

"Although this year's competition had some hiccups due to COVID-19, we were still able to finish strong, move the final judging rounds to a virtual process, and name our 2020 winners," said Mic McCrory, competition organizer. "Everyone who participated this year had impressive ideas, and I am looking forward to seeing where these winners take their businesses next."

VICTORY
Within
REACH



There is something simple within our reach that we can do that even the most conditioned athlete would envy, and that is to prepare well and finish strong. The thrill of winning a race lasts only moments. However, a well-planned estate provides joy and satisfaction for years.

Working with an attorney to plan your estate is probably less expensive than you might think, and the results, fortunately, are more rewarding. We have simple, free tools to help you get started, prepare and complete your plan. **For our free, no-obligation tools, visit www.nwmfgifts.org.**

Copyright © 2018 Crescendo Interactive, Inc. Used by permission. 18SR47



For additional information about the winners, their businesses, and the IDEA Competition, visit www.ideacompetition.org.



NONPROFIT ORG
U.S. POSTAGE
PAID
Mailed From
Zip Code 56601
Permit No.36

201 3rd Street NW
Bemidji, MN 56601

www.nwmf.org

218-759-2057

NORTHWEST MINNESOTA FOUNDATION GIVING CIRCLE

Northwest Minnesota Foundation's Giving Circle members are individuals and businesses that care deeply about Northwest Minnesota and want to support the continued well-being of the region— helping to sustain the place we call home.

As a donor, your gift helps accomplish much in the development and impact of the Northwest Minnesota Foundation. Giving Circle members support all areas of our work—helping people start and grow new businesses, support collaboratives to address housing capacity in the region, better serve those in our community experiencing homelessness, find sustainable solutions to quality child care in Northwest Minnesota, and addressing long-standing social challenges.

Members of our Annual Circle of Giving make an annual contribution of \$500 or more to the NMF Endowment. That's just \$40 a month to make an impact on the region in which you live! The gift may be made outright in cash or in stock as well.



Free Webinar Series

**Seeds of Promise:
Growing Resiliency in
Times of Stress**

Visit nwmf.org and click
Support for Farmers and Ranchers
on the homepage




**APPLY FOR
YOUR BALLOT
TODAY**

mnvotes.org **VOTE FROM HOME**